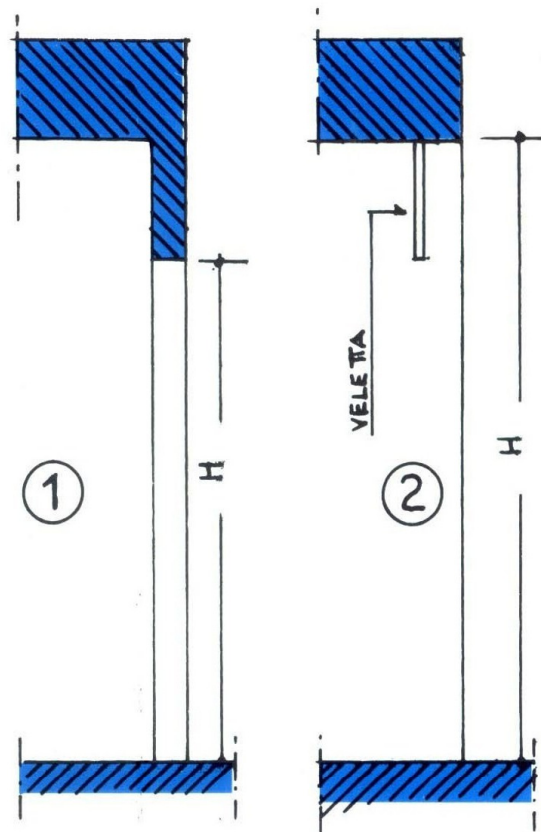
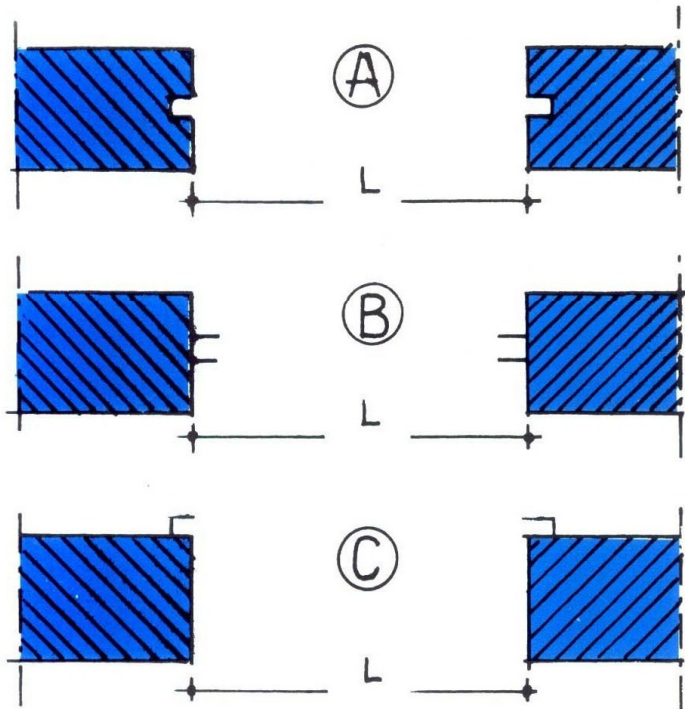
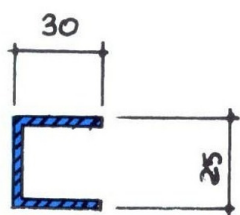


SCHEMA DI APPLICAZIONE

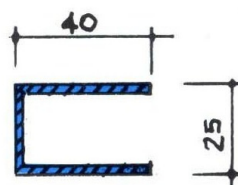


Altezza luce serranda	Diametro avv.to
2000 mm.	300 mm.
2500 mm.	320 mm.
3000 mm.	340 mm.
3500 mm.	360 mm.
4000 mm.	370 mm.

Spessori	Largh. massime
8/10	3200 mm.
10/10	4500 mm.



U 30x25
Guide per larghezze di luce fino a mm. 3000



U 40x25
Per larghezze superiori